

放射治療

癌症是可以治癒的

隨著當今醫學的發展，不少癌症患者的病情已可受到控制和治癒。如能儘早獲得準確診斷，並接受適當治療，更能大大提高治癒康復的機會。

放射治療是甚麼？

放射治療是利用高能量放射來治療癌症，放射可以消滅癌細胞或遏止其生長。放射治療是治療癌症的方法之一，可以單獨使用，也可與外科手術或化療合併使用。



優點

優秀的放射治療服務

本院配備先進精密的診斷儀器和放射治療機，能準確而有效地診斷和治療癌症。

準確安全的放射治療

採用最尖端的放射治療技術達到治療效果，並盡量減低對正常組織的傷害和副作用。

聚集頂尖的腫瘤專科人才

享譽國際和本地的專科醫療隊伍，全心致力為病者提供專業而個人化的服務。



專業服務

診症

接受放射治療之前，本院綜合腫瘤科中心之腫瘤科醫生會為病者診症，選擇最適合病者需要的療法。

療程計劃

如病者同意接受放射治療，我們將為病者計劃療程。第一次應診時，放射治療師使用傳統X光模擬機或電腦掃描模擬機，為病者須接受治療的範圍

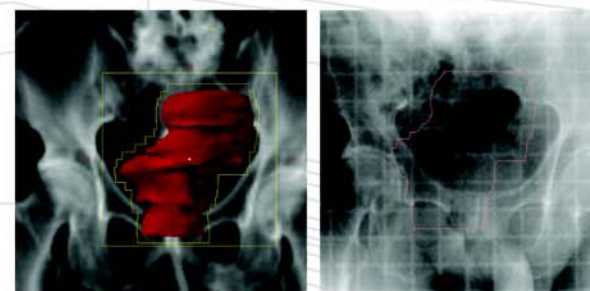
照射定位，然後以現今最精密的療程計劃系統分析數據，計算放射的分佈以達到治療效果。定位後在病者皮膚上畫上記號，顯示需要治療的部位。

體外放射治療

本部門採用最先進的直線加速器來進行放射治療技術，包括：

- 三維適體放射治療：採用多葉式準直儀，使照射高量區與癌腫的形狀一致。
- 強度調控放射治療：大量微細的射束從不同角度照射，在癌腫位置匯合。
- 立體定位放射手術或立體定位放射治療：主要用於治療頭頸部位的癌腫，採用特別工具固定體位，以確保照射準確。

傳統的放射療法只採用一條射束，相較之下，上述新技術的準確度較高，亦能減低對周圍組織的損害。



Integrated treatment planning and verification ensures treatment accuracy. Computer generated treatment image (left) is compared to actual treatment position (right).

療程計劃須經仔細制訂和覆檢，以確保治療準確。比較由電腦設計的治療圖(左圖)和治療時的實際位置(右圖)

前列腺粒子植入

植入放射性粒子能有效治療早期前列腺癌，比體外放射治療對病者的日常生活影響較少。含有放射性碘(I-125)的粒子植入癌腫中，集中消滅癌細胞，而不會傷害尿道、膀胱等周圍組織。



Radioactive iodine (I-125) seeds
放射性碘 (I-125) 子

專科治療 全人關懷

為您提供最佳諮詢和治療

通常由綜合腫瘤科中心或院外醫生轉介病者至本部門接受治療。各方緊密合作和溝通，為病者減省不必要的麻煩，確保治療服務全面和達致最高療效。

保障您的私隱

以病人為本是我們的服務宗旨。接待員態度親切，主動細心。候診處亦經特別設計，分為獨立間格以保障病者私隱。



給您支持和關懷

我們明白治療癌症不只是醫治身體上的疾病。因此，我們會顧及病者各方面的需要：如按照病者的日常作息來安排治療時間，為他們提供營養指導、輔導支援小組及教育課程等。經過特別受訓的護士，能關顧癌症病者的情緒上需要。

如您自己或親友在接受放射治療之前或期間有任何疑問，請與我們聯絡。

放射治療部

香港跑馬地山村道二號
養和醫院李樹培院地下

辦公時間：

星期一至五：上午八時至下午六時
星期六：上午八時至下午一時
(星期日及公眾假期休息)

如有查詢，歡迎聯絡我們

電話：28358916

傳真：28927509

電郵：radiotherapy@hksh.com

網址：www.hksh.mo



About Radiotherapy

Cancer is curable

Today, most people diagnosed with cancer can expect their disease to be controlled or cured. The chances of a cure may improve greatly when you get the most accurate diagnosis and appropriate treatment from the very beginning.

What is radiotherapy ?

Radiotherapy uses high energy radiation to treat cancer. Radiation can kill cancer cells or keep them from growing. Radiotherapy is one form of cancer treatments, where a patient may have radiotherapy alone or in combination with surgery or chemotherapy.

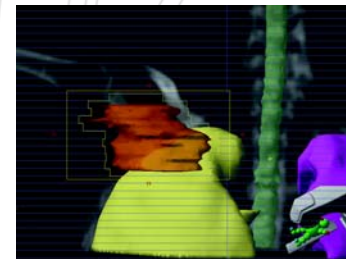
Our Strengths

Leading-edge Radiotherapy Service in Hong Kong

We are equipped with state-of-the-art imaging equipment for accurate diagnosis and cutting-edge radiotherapy equipment for effective treatment of cancer.

Accurate and Safe Radiation Oncology

Technological advances are employed to enable precise irradiation of the tumour target with maximal sparing of normal organs and minimum side effects.



Multi-Leaf Collimator targets the radiation to the tumour while protecting healthy tissues.

多葉式準直儀能使照射區對準癌腫，同時保護正常組織免受傷害。

Team Effort by Experts in Oncology

A team of local and global experts in cancer management is dedicated to provide the best professional and personal care.

Our Services

Consultation

Prior to any radiotherapy treatment, patients will be interviewed by clinical oncologists at our Comprehensive Oncology Centre to recommend the best treatment strategy for the benefits of patients.

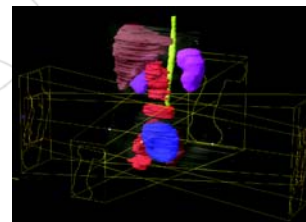
Treatment Planning

If, after consultation, the patient decides to proceed with radiotherapy treatment, the first session will be arranged for treatment planning. Simulation is done to locate the exact area to be treated using a conventional X-ray or CT simulator. We use the most advanced treatment-planning system in the market to gather all necessary information to work out the best distribution of radiation. Once the treatment area is finalized, the radiographer will make skin marks for subsequent sessions.

External Beam Radiotherapy

Our state-of-the-art linear accelerators enable the delivery of the most advanced radiotherapeutic techniques, including:

- 3DCRT: Multiple radiation fields are shaped to conform to the shape of the target with a multi-leaf collimator.



- IMRT: Thousands of tiny radiation beams enter into the body from different angles and intersect on the tumour.
- Stereotactic Surgery or Radiotherapy: Mainly for treating tumours in the head and neck region. Special fixation device and delivery system are used to achieve high accuracy in the delivery of radiation.

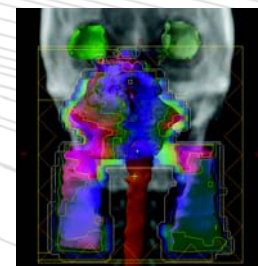
As compared to conventional treatment using a single radiation beam, these techniques are more accurate and safe to treat the cancer while protecting the healthy tissues.

Prostate Seed Implant

Implanting radioactive seeds into the prostate is an effective treatment for early prostate cancer that is less disruptive to their lives than standard treatment. The seeds containing radioactive iodine (I-125) are positioned at the tumour site for maximum effect on the tumour, while sparing the urethra, bladder and other nearby organs.

IMRT radiation dose map. The intensity of radiation is varied across the treatment field, with high dose area in red and low dose area in blue.

強度調控放射治療的放射劑量分佈圖。照射區內不同位置的放射強度不一，可分為高劑量（紅色）和低劑量（藍色）部位。



How do we help?

We provide the best consultation and treatment

Patients are either referred by the Comprehensive Oncology Centre or referring doctors. We work together to seamlessly deliver the best treatment care for best treatment outcomes.

We protect your privacy

Patient-centered care is our philosophy. Our Reception is manned by caring and helpful staff. The waiting area is specially designed with individual cubicles to provide maximum comfort and privacy.

We support and care

We realize that there is more to cancer treatment than just radiation. We offer a flexible appointment schedule that fits into the patients' daily routine. We also offer nutritional guidance, support groups, and educational programmes. Trained nurses can help with emotional concerns.

If you have any concern prior to or during a course of radiotherapy treatment for yourself or anyone you know, please contact us and we are always there to help.

Department of Radiotherapy

Hong Kong Sanatorium & Hospital
G/F, Li Shu Pui Block, 2 Village Road,
Happy Valley, Hong Kong

Opening Hours:

Monday to Friday : 8:00 am - 6:00 pm
Saturdays : 8:00 am - 1:00 pm
(Closed on Sundays and Public Holidays)

For information and enquiries, please contact us at:

Tel : 2835 8916 Fax : 2892 7509
E-mail : radiotherapy@hksh.com
Website : www.hksh.com

© Hong Kong Sanatorium & Hospital Ltd.
All rights reserved

放射治療部

Department of Radiotherapy



養和醫院
Hong Kong Sanatorium & Hospital